

Postoperative atrial fibrillation is associated with delayed early rehabilitation after heart valve surgery: a multicenter study

Michitaka KATO, PT, Ph.D.¹, Masakazu SAITOH, PT, Ph.D.², Tomonori KAWAMURA, PT, MSc³, Kentaro IWATA, PT, MSc⁴, Koji SAKURADA, PT, Ph.D.⁵, Daisuke OKAMURA, PT⁶, Masayuki TAHARA, PT⁷, Satoshi YUGUCHI, PT, Ph.D.⁸, Kenta KAMISAKA, PT, Ph.D.⁹, Keisuke OURA, PT, MSc¹⁰, Yuji MORI, PT¹¹, Tomoyuki MORISAWA, PT, Ph.D.¹² and Tetsuya TAKAHASHI, PT, Ph.D.¹³

¹Tokoha University

²Sakakibara Heart Institute

³Kishiwada Tokushukai Hospital

⁴Kobe City Medical Center General Hospital

⁵The Cardiovascular Institute

⁶St.Luke's International Hospital

⁷Higashi Takarazuka Satoh Hospital

⁸Japan University of Health Sciences

⁹Kitano Hospital

¹⁰Kansai Electric Power Hospital

¹¹Shizuoka Medical Center

¹²Hyogo University of Health Sciences

¹³Juntendo University

ABSTRACT. Objective: Postoperative atrial fibrillation (POAF) is a common complication after cardiac surgery. The aim of this multicenter study was to determine the relationship between POAF and patients' progress in early rehabilitation after heart valve surgery. **Methods:** We enrolled 302 patients (mean age, 69 ± 10 years) who had undergone heart valve surgery. POAF was monitored using continuous electrocardiogram telemetry, and the Short Physical Performance Battery (SPPB) was used to assess lower-extremity function before surgery and at the time of discharge. Progress in early rehabilitation was evaluated by the duration from the surgery to independent walking. We determined factors associated delayed early rehabilitation and evaluated the interplay of POAF and delayed early rehabilitation in increasing the risk of decline in lower-extremity function from preoperatively to hospital discharge. **Results:** Multivariate analysis determined POAF to be independent predictors of delayed early rehabilitation after heart valve surgery (OR: 3.906, P = .01). The association between delayed early rehabilitation and decline in lower extremity function was stronger in patients with POAF (OR: 2.73, P = .041) than in those without (OR: 2.22, P = .052). **Conclusions:** POAF was clinical predictors of delayed early rehabilitation in patients undergoing heart valve surgery. The combination of POAF with delayed early rehabilitation conferred a high risk of decline in lower-extremity function during hospitalization.

Key words: postoperative atrial fibrillation, heart valve surgery, rehabilitation, lower-extremity function

(*Phys Ther Res* 00: 00-00, 0000)

Received: April 11, 2018

Accepted: September 29, 2018

Advance Publication by J-STAGE: March 11, 2019

Correspondence to: Michitaka Kato, Faculty of Health Science, Department of Shizuoka Physical Therapy, Tokoha University, 1-30 Mizuochicho, Aoi-ku, Shizuoka 420-0831, Japan

e-mail: katomanzooo@sz.tokoha-u.ac.jp

doi: 10.1298/ptr.E9957

In patients who have undergone cardiac surgery, prolonged inactivity postoperatively is associated with increased sensation of fatigue and reduced functional capacity¹. Recently, early rehabilitation has been shown to play an important role in enhancing postoperative recovery of physical function during hospitalization after cardiac surgery². Studies have reported that early rehabilitation significantly reduced both the length of hospital stay and

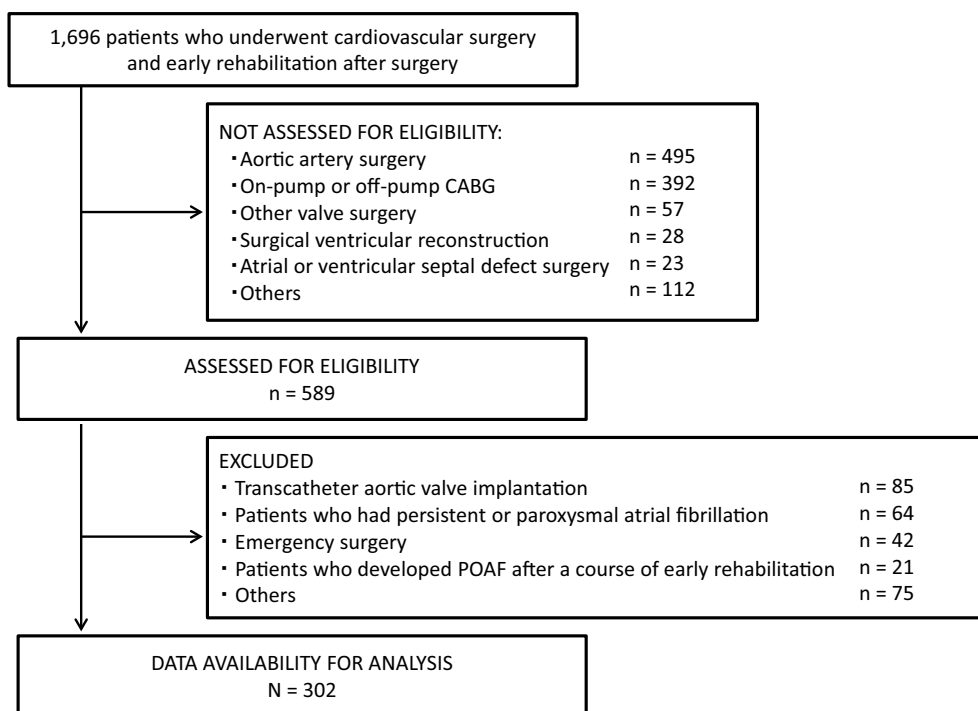


Figure 1. Exclusions

CABG: Coronary artery bypass grafting; POAF: postoperative atrial fibrillation.

medical costs while providing similar clinical outcomes after cardiac surgery^{3,4)}.

However, early rehabilitation can be delayed by various postoperative complications, such as heart failure, pulmonary complications, neurologic deficits, and acute kidney dysfunction^{5,6)}. Postoperative atrial fibrillation (POAF) is a common complication in patients who have undergone heart valve surgery⁷⁾. A previous study reported that postoperative median intensive care unit stay and hospital stay were higher in patients with POAF compared with those with sinus rhythm (SR) after cardiac surgery (3.6 days in POAF vs. 2 days in SR; 10 days in POAF vs. 7 days in SR, respectively)⁸⁾. Because POAF has been demonstrated to increase the likelihood of stroke or myocardial infarction and to be associated with an increased risk of short- and long-term morbidity and mortality⁹⁾, we speculated that POAF may interfere with progress in postoperative early rehabilitation. However, the association between POAF and progress in early rehabilitation in patients undergoing heart valve surgery has not been fully elucidated. In addition, it is unknown whether delayed early rehabilitation because of POAF affects physical functional recovery during hospitalization.

This study investigated the relationship between POAF and progress in early rehabilitation in patients who have undergone heart valve surgery.

Methods

Patients

The present investigation was a multicenter study conducted with the approval of the ethics review committee of Hyogo University Health Sciences (chairperson of the ethics committee, Michiaki Baba; protocol number, 12029; date of approval by the ethics committee, 11/6/2014), in addition to the local institutional board at each participating hospital. Because of the retrospective nature of the study, written informed consent to participate was waived. We identified 1,696 patients who, between April 2015 and March 2016, underwent cardiovascular surgery and early rehabilitation after surgery at 10 institutions in Japan (Figure 1). Of these patients, 589 consecutive patients who underwent aortic and mitral valve surgery were enrolled in the study. Patients who had persistent or paroxysmal atrial fibrillation (AF) diagnosed by Holter electrocardiography (ECG) preoperatively were excluded from this study. We also excluded patients who underwent emergency surgery or transcatheter aortic valve implantation. In addition, patients who developed POAF after a course of early rehabilitation were excluded because progress in early rehabilitation was an outcome of the study. After applying inclusion and exclusion criteria, 302 patients were enrolled (ratio of patients in each facility: Sakakibara Heart Institute, 32%; Kishiwada Tokushukai Hospital, 20%; Kobe City Medical Center General Hospital, 7%; The Cardiovascular Institute, 7%; Fukuyama Cardiovascular Hospital, 7%; St. Luke's International Hospital, 6%; Kitano Hospital, 6%; Shizuoka

Medical Center, 6%; Higashi Takarazuka Satoh Hospital, 5%; Sakakibara Heart Institute of Okayama, 5%).

Perioperative management and postoperative early rehabilitation

Preoperative antiarrhythmic therapies were not routinely adopted. In general, β -blockers were restarted in the postoperative period as soon as possible unless contraindicated for clinical reasons. At the end of surgery, patients were transferred to a dedicated intensive care unit and managed postoperatively. Amiodarone, digoxin, β -blockers, and diltiazem were constituted as standard pharmacological treatment for rate and rhythm control of POAF¹⁰. Warfarin was administered within 48 h of the onset POAF, with the aim of achieving an international normalized ratio of between 2.0 and 3.0¹⁰.

All patients underwent early rehabilitation from the day following surgery, according to Japanese Circulation Society guidelines for rehabilitation in patients with cardiovascular disease, as part of the standard of care at each participating hospital². Patients participated in postoperative early rehabilitation consisting of upper- and lower-extremity exercise in bed, sitting on the edge of the bed, standing at the bedside, and walking around the bed and for 100 m on the ward². Progress in early rehabilitation was carried out according to criteria for evaluating the results of exercise stress tests, and conducted regardless of the day of the week by a physical therapist or nurse. Even if patients developed POAF, early rehabilitation was carried out if their hemodynamic status was stable. After early rehabilitation, patients continued gait training for up to 500 m and performed endurance training using a stationary bike or treadmill in the hospital's inpatient rehabilitation center until they were discharged from the hospital.

Data collection

Preoperative patient characteristics, including age, sex, body mass index (BMI), comorbidities, laboratory values, cardiac functions, and pulmonary function were obtained from medical records at each institution. Cardiac functions were assessed by ultrasound at each participating hospital. Left ventricular (LV) and left atrial dimensions were measured, and LV ejection fraction (LVEF) was assessed using the biplane Simpson method. LV diastolic function was calculated as the ratio of early mitral inflow velocity to mitral annular early diastolic velocity (E/e'). Forced vital capacity (FVC) and forced expiratory volume in 1 s (FEV₁) were measured using a spirometer and used to calculate FEV₁/FVC, a parameter of pulmonary function, in accordance with Japanese Respiratory Society guidelines.

Frailty index for elderly Japanese (FI-J) score was assessed as a parameter of frailty¹¹. The FI-J is a 15-item self-report questionnaire that has been reported to have sensitivity and specificity of 70% and 89%, respectively, with the

Fried frailty phenotype¹¹. Assessments of FI-J were conducted on the day before surgery.

Participants performed the Short Physical Performance Battery (SPPB), which is a brief performance battery based on a timed 4-m walk test, a test of repeated chair stands, and a set of standing balance tests¹². Each test score ranged from 0 to 4. The sum of the three test scores equaled the final SPPB score, with a possible range of 0 to 12. A score of 12 indicated the highest degree of lower-extremity function. The SPPB has been validated as an assessment tool for measuring lower-extremity function and is widely used in clinical settings¹³; it is also an independent predictor of long-term survival of older patients with heart failure¹⁴. In the present study, the SPPB was performed on the day before surgery and on the day of hospital discharge. To assess decline in lower-extremity function in patients during hospitalization, the change in SPPB score from preoperatively to hospital discharge was calculated (Δ SPPB score). It has been reported that a change of 1 point in SPPB score is the best initial estimate of a substantial clinical effect¹⁵. Therefore, we defined a decline in lower-extremity function as a decrease in patients' SPPB score of more than 1 point from preoperatively to hospital discharge.

Surgical procedure, operative duration, cardiopulmonary bypass (CPB) duration, and aortic cross-clamping duration were obtained from medical records and used as parameters of intraoperative clinical characteristics.

Detection of POAF

Heart rate and rhythm were monitored, using continuous ECG telemetry, for the occurrence of POAF until postoperative day (POD) 6. In a study by Echahidi et al., POAF tended to occur within 2-4 days after the procedure and 94% of patients developed this dysrhythmia before the end of POD 6¹⁶. POAF was defined as any documented sustained episodes of AF lasting ≥ 5 min recorded on continuous telemetry¹⁷. The diagnosis of POAF was confirmed using a 12-lead electrocardiogram by a cardiologist at each participating hospital.

Evaluation of progress of early rehabilitation

We examined the duration from the time of surgery to the day when patients were able to complete sitting on the edge of the bed, standing at the bedside, and walking around the bed. We also investigated the duration from the time of surgery until patients were able to complete a 100-m walk without assistance as a parameter of progress in early rehabilitation⁵. According to Japanese Circulation Society guidelines, patients should complete a 100-m walk on or before POD 5. For this reason, patients were divided into two groups: non-delayed and delayed early rehabilitation. In addition, the length of intensive care unit stay and postoperative hospital stay were also evaluated as measures of early rehabilitation progress.

Sample size

The sample size was calculated based on a significance level of .05, and power equal to .80, using the software EZR (Easy R), which is based on R (<http://www.jichi.ac.jp/saitama-sct/SaitamaHP.files/statmed.html>). When the rate of delayed early rehabilitation in a previous study was used as a reference value⁹⁾, the sample size was determined to be 268 patients or more in total.

Statistical analysis

Preoperative and intraoperative clinical characteristics, and parameters of progress in early rehabilitation, were compared between patients who developed POAF (POAF group) and those who maintained sinus rhythm (SR group) to evaluate the characteristics of POAF patients. Variables were compared between groups using the unpaired Student's *t*-test or Fisher's exact test.

Univariate and multivariate logistic regression analysis using the backward-elimination method with likelihood ratio were carried out using delayed early rehabilitation as the dependent variable. For multivariate analyses, the variables identified as significant in univariate analysis were used as exploratory variables, and odds ratios (ORs) were calculated with 95% confidence intervals (CIs). Statistically significant factors identified in multivariate analyses were considered independent predictors of delayed early rehabilitation.

In a sub-analysis investigating the interplay of POAF and delayed early rehabilitation in increasing the risk of decline in lower-extremity function, we divided our patients into four groups according to heart rhythm and progress in early rehabilitation: SR/non-delayed, SR/delayed early rehabilitation, POAF/non-delayed, and POAF/delayed early rehabilitation. Multivariate logistic regression analyses were carried out for the four groups and age as exploratory variables, with decline in lower-extremity function from preoperatively to hospital discharge as the dependent variable.

Data are presented as mean \pm standard deviation for continuous variables, and as frequencies and percentages for categorical variables. Differences with a *P* value of $<.05$ were considered significant. All analyses were carried out using IBM SPSS Statistics for Windows, Version 19.0 (IBM Corp., Armonk, NY, USA).

Results

Table 1 summarizes the pre- and intraoperative clinical characteristics of the POAF ($n = 66$; mean age 67 ± 11 years) and SR ($n = 236$; mean age 73 ± 9 years) patients. POAF occurred most frequently on POD 2 (32%), followed by POD 3 (27%) and POD 1 (17%). Age, proportion of females, LVEF, E/e', and proportion of complex surgery were significantly higher in POAF patients than in SR patients (*P*

$<.001$, *P* = .02, *P* = .009, *P* = .037, and *P* = .027, respectively). There were no significant differences in BMI; the proportion of patients with hypertension, diabetes mellitus, dyslipidemia, peripheral artery disease, myocardial infarction, and cerebrovascular accident; B-type natriuretic peptide, albumin, and C-reactive protein concentrations; estimated glomerular filtration rate (eGFR); glycohemoglobin (HbA_{1c}) percentage; left atrial dimension; FEV₁/FVC; SPPB score; FI-J score; and durations of operation, CPB, and aortic cross-clamp.

Variables indicating progress in early rehabilitation are shown in Table 2. The POAF group took significantly more time to complete standing at the bedside (*P* = .019), walking around the bed (*P* = .007), and a 100-m walk without assistance (*P* = .001). Length of hospital stay after surgery and delayed early rehabilitation were also significantly greater for the POAF group than for the SR group (*P* = .008 and *P* $<.001$, respectively).

Table 3 shows the results of univariate analysis of factors related to delayed early rehabilitation. Unadjusted univariate analysis identified age, albumin, eGFR, CRP, HbA_{1c}, E/e', FEV₁/FVC, SPPB, durations of operation and CPB, and POAF (absence, 0; presence, 1) as factors related to delayed early rehabilitation. After eliminating CPB duration, which was closely related to operative duration ($r = 0.74$, $P < 0.001$), age, albumin, eGFR, CRP, HbA_{1c}, E/e', FEV₁/FVC, SPPB, operative duration, and POAF (absence, 0; presence, 1) were adopted as exploratory variables in the multivariate logistic regression model. Ultimately age, albumin, operative duration, and POAF were identified as independent predictors of delayed early rehabilitation after heart valve surgery in multivariate analysis (Table 4).

The association between delayed early rehabilitation and decline in lower-extremity function from preoperatively to hospital discharge was significantly stronger in the POAF group (OR 2.73, 95% CI 1.05-7.07, *P* = .041) than in the SR group (OR 2.22, 95% CI 0.99-5.21, *P* = .052) (Figure 2).

Discussion

POAF is the most common complication after cardiac surgery. The present study has shown POAF to be a clinical predictor of delayed early rehabilitation in patients undergoing heart valve surgery, while also establishing that the combination of POAF with delayed rehabilitation confers a high risk of decline in lower-extremity function during hospitalization.

To confirm the characteristics of POAF patients, we compared characteristics of POAF and SR patients. In the present study, POAF occurred most often on POD 2, which is consistent with the results of another study in which the mean time of onset of POAF was 2.6 ± 2.2 days postoperatively¹⁸⁾, and age, E/e', and proportion of patients undergo-

Table 1. Pre- and intraoperative clinical characteristics

	Total (N=302)	SR group (n=236)	POAF group (n=66)	P
Age (years)	69 ± 10	67 ± 11	73 ± 9	<.001
Male / Female	190/112	155/81	35/31	.020
Body mass index (kg/m ²)	22.6 ± 3.3	22.6 ± 3.4	22.5 ± 3.1	.758
Hypertension n (%)	193 (64)	153 (65)	40 (62)	.604
Diabetes mellitus n (%)	65 (22)	47 (20)	18 (28)	.175
Dyslipidemia n (%)	106 (35)	78 (33)	28 (43)	.153
Peripheral artery disease n (%)	22 (7)	17 (7)	5 (8)	.700
Myocardial infarction n (%)	24 (8)	19 (8)	5 (8)	.978
Cerebrovascular accident n (%)	30 (10)	25 (11)	5 (8)	.225
B-type natriuretic peptide (pg/mL)	301 ± 428	314 ± 459	248 ± 268	.338
Albumin (mg/dL)	4.0 ± 0.5	4.0 ± 0.5	4.0 ± 0.4	.813
eGFR (mL/min/1.73 m ²)	55.1 ± 23.1	55.8 ± 23.5	52.2 ± 21.4	.287
C-reactive protein (mg/dL)	0.22 ± 0.34	0.22 ± 0.35	0.22 ± 0.34	.892
HbA _{1c} (%)	5.8 ± 0.9	5.7 ± 0.7	6.0 ± 1.2	.128
LVEF (%)	59.3 ± 12.9	58.3 ± 13.3	62.6 ± 10.7	.009
Left atrial dimension (mm)	41.7 ± 6.9	41.5 ± 7.1	42.5 ± 6.3	.338
E/e'	19.1 ± 9.3	18.5 ± 8.6	21.5 ± 11.1	.037
FEV ₁ /FVC (%)	77.2 ± 9.3	77.1 ± 9.4	78.1 ± 8.9	.452
Short physical performance battery score (point)	11.0 ± 1.8	10.9 ± 2.0	11.1 ± 1.4	.615
Frailty index (point)	2.3 ± 2.2	2.3 ± 2.3	2.3 ± 1.9	.940
Surgical procedure				
Isolated AVR or AVP n (%)	91 (30)	78 (33)	11 (16)	
Isolated MVR or MVP n (%)	45 (15)	38 (16)	9 (14)	.027
Complex surgery n (%)	166 (55)	120 (51)	46 (70)	
Operative duration (min)	298 ± 97	292 ± 95	318 ± 100	.064
Cardiopulmonary bypass duration (min)	158 ± 58	156 ± 59	166 ± 54	.210
Aortic cross clamping duration (min)	112 ± 42	110 ± 42	120 ± 42	.135

Data expressed as mean ± standard deviation or n (%).

AVP: aortic valvuloplasty; AVR: atrial valve replacement; E/e': early mitral inflow velocity to mitral annular early diastolic velocity; eGFR: estimated glomerular filtration rate; FEV₁: forced expiratory volume in 1 s; FVC: forced vital capacity; HbA_{1c}: glycohemoglobin; LVEF: left ventricular ejection fraction; POAF: postoperative atrial fibrillation; MVP: mitral valvuloplasty; MVR: mitral valve replacement; SR: sinus rhythm.

Table 2. Early rehabilitation progress

	SR group (n=236)	POAF group (n=66)	P
Sitting on edge of bed (days)	1.3 ± 0.9	1.5 ± 1.2	0.176
Standing at bedside (days)	1.6 ± 1.2	2.5 ± 2.9	0.019
Walking around bed (days)	2.4 ± 1.9	4.1 ± 4.5	0.007
100 m of independent walking (days)	4.6 ± 3.4	7.2 ± 5.1	0.001
Length of stay in ICU (days)	2.9 ± 2.4	3.2 ± 2.9	0.431
Length of postoperative hospital stay (days)	17.7 ± 9.6	23.0 ± 14.1	0.008
Patients with delayed early rehabilitation, n (%)	73 (31)	46 (69)	<0.001

Data expressed as mean ± standard deviation.

ICU: intensive care unit; POAF: postoperative atrial fibrillation; SR: sinus rhythm.

ing complex surgery were significantly greater in POAF patients. It is well known that the risk of POAF is increased in the elderly, in those with cardiac diastolic dysfunction, or in those who undergo a complex procedure¹⁶. However, in the present study the incidence of POAF was 22%, which is

low compared with the 40% to 50% reported by a study of the incidence of POAF after valve replacement or repair, or combined procedures¹⁹. Previous studies included patients undergoing emergency surgery and with paroxysmal AF, and defined POAF as including other postoperative arrhyth-

Table 3. Univariate analysis of factors related to the retardation of early rehabilitation

	OR	95% CI	P
Age (1 years old increase)	1.077	1.046-1.108	.001
Sex (male)	0.614	0.371-1.018	.060
Body mass index (1 kg/m ² increase)	0.866	1.006-1.083	.866
Hypertension (presence)	1.147	0.684-1.925	.603
Cerebrovascular accident (presence)	1.496	0.671-3.338	.325
B-type natriuretic peptide (1 pg/mL increase)	1.001	1.000-1.001	.155
Albumin (1 mg/dL increase)	0.588	0.364-0.951	.030
eGFR (1 mL/min/1.73 m ² increase)	0.986	0.975-0.996	.009
C-reactive protein (1 mg/dL increase)	2.757	1.310-5.800	.008
HbA _{1c} (1 % increase)	1.485	1.035-2.130	.032
LVEF (1 % increase)	0.996	0.977-1.015	.688
Left atrial dimension (1 mm increase)	0.997	0.962-1.033	.862
E/e' (1 increase)	1.056	1.025-1.088	<.001
FEV ₁ /FVC (1 % increase)	0.968	0.940-0.997	.032
Short physical performance battery score (1 point increase)	0.779	0.673-0.902	.001
Frailty Index (1 point increase)	1.137	0.997-1.297	.056
Surgical procedure			
Isolated AVR or AVP		Reference	
Isolated MVR or MVP (presence)	0.602	0.261-1.387	.233
Complex surgery (presence)	1.063	0.611-1.851	.828
Operative duration (1 min increase)	1.006	1.003-1.009	<.001
Cardiopulmonary bypass duration (1 min increase)	1.007	1.003-1.011	.002
POAF (presence)	4.711	2.595-8.552	<.001

AVP: aortic valvuloplasty; AVR: atrial valve replacement; CI: confidence interval; E/e'; early mitral inflow velocity to mitral annular early diastolic velocity; eGFR: estimated glomerular filtration rate; FEV₁; forced expiratory volume in 1 s; FVC: forced vital capacity; HbA_{1c}: glycohemoglobin; LVEF: left ventricular ejection fraction; MVP; mitral valvuloplasty; MVR; mitral valve replacement; OR: odds ratio; POAF: postoperative atrial fibrillation.

Table 4. Multivariate analysis of factors related to delayed early rehabilitation

	OR	95% CI	P
Age (1 years old increase)	1.084	1.023-1.148	.007
Albumin (1 mg/dL increase)	0.763	0.552-0.974	.011
Operative duration (1 min increase)	1.013	1.007-1.019	<.001
POAF (presence)	3.906	1.376-11.082	.010

Models χ^2 , <.001; Hosmer-Lemshow, .704; Nagelkerke R², .438.

CI: confidence interval; OR: odds ratio; POAF: postoperative atrial fibrillation.

mias (e.g., atrial flutter and atrial tachycardia)¹⁹). Moreover, duration of POAF was not included as a criterion for diagnosis¹⁹). A possible explanation for the results of the present study is that the subjects and definition of POAF differed from those of previous studies.

In the present study, multivariate analysis identified POAF, age, albumin, and operative duration as independent predictors of delayed early rehabilitation after heart valve surgery. POAF has been reported to be a major morbid event associated with increased risks of postoperative thromboembolism and stroke, hemodynamic compromise, ventricular dysrhythmias, and reintubation^{9,20-22}). In addition, weakened atrial and ventricular contraction, characteristic

of AF, is well known to cause loss of cardiac output, which can exacerbate heart failure²³). We therefore considered these postoperative complications and/or subjective symptoms such as palpitation, shortness of breath, and dizziness resulting from heart failure as reasons for the relationship between POAF and delayed early rehabilitation. Poor preoperative nutritional status and older age have also been shown to be clinical predictors of delayed rehabilitation after cardiac surgery^{24,25}), and intensely invasive surgery can lead to adverse events (pain, nausea/vomiting, ileus, stress-induced catabolism, impaired pulmonary function, increased cardiac demand, and risk of thromboembolism), which in turn result in prolonged mechanical ventilation

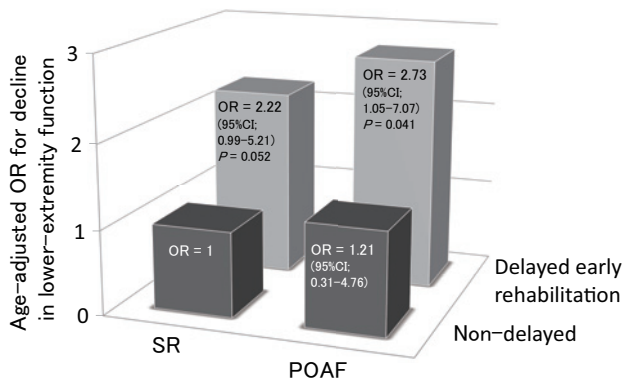


Figure 2. The interplay of POAF and delayed early rehabilitation in increasing the risk of decline in lower extremity function
OR: odds ratio; POAF: postoperative atrial fibrillation; SR: sinus rhythm.

and disturbed early rehabilitation²⁶). Thus, we consider the results of these studies to be consistent with those of the present study.

With regard to the risk of decline in lower-extremity function from preoperatively to hospital discharge, the present study suggested an interaction between POAF and delayed early rehabilitation. It is important to maintain lower-extremity function during hospitalization because of its association with long-term prognosis in patients who undergo cardiac surgery²⁷). Previous studies have shown that AF alters atrial structure and performance, and an irregular heart rate diminishes LV filling and cardiac output²⁸). Reduced cardiac output impairs peripheral perfusion and ultimately diminishes the capacity for activities of daily living²⁹). For this reason, AF is known to contribute directly to the decline in physical performance²²). In addition, early exercise training in critically ill patients was demonstrated to enhance recovery of functional exercise capacity and muscle strength at hospital discharge³⁰). Schweickert et al. reported that patients who underwent early rehabilitation had improved return to independent functional status at hospital discharge when compared with patients who received standard care without early rehabilitation³¹). Therefore, we considered delayed early rehabilitation also to lead to reduced physical function and capacity. To maintain patients' lower-extremity function, their postoperative complications and progress in early rehabilitation must be carefully monitored, and a different exercise modality or alternative therapy should be considered for those who have POAF and delayed early rehabilitation.

The present study has several limitations. First, it focused on the relationship between POAF and recovery of postoperative physical function only in patients undergoing elective heart valve surgery. Because POAF also manifests in patients undergoing other cardiac or thoracic vascular surgery, these populations should also be investigated. Al-

though we adjusted for confounders such as preoperative and intraoperative clinical characteristics, including physical function, we cannot exclude the possibility that progress in early rehabilitation was affected by other factors, such as psychological aspects or other postoperative complications. Another limitation was the retrospective nature of the study. Further prospective investigations, including these additional confounders in multivariate analysis, should be conducted.

Conclusions

The present study demonstrated POAF to be a clinical predictor of delayed early rehabilitation in patients who underwent heart valve surgery. We also found that the combination of POAF with delayed early rehabilitation conferred a high risk of decline in lower-extremity function during hospitalization.

Conflict of Interest: The authors declare that they have no conflicts of interest.

Acknowledgments: We thank the staff members of all the hospitals, institutions, and universities of the Cardiovascular Surgery Physiotherapy Network who collaborated in this study. We are grateful to the following institutions for facilitating this multicenter study: Sakakibara Heart Institute, Kishiwada Tokushukai Hospital, Kobe City Medical Center General Hospital, The Cardiovascular Institute, St. Luke's International Hospital, Higashi Takarazuka Satoh Hospital, Sakakibara Heart Institute of Okayama, Kitano Hospital, Fukuyama Cardiovascular Hospital, Hyogo University of Health Sciences, Tokyo University of Technology, Tokoha University and Shizuoka Medical Center.

References

- 1) da CostaTorres D, Dos Santos PM, *et al.*: Effectiveness of an early mobilization program on functional capacity after coronary artery bypass surgery: A randomized controlled trial protocol. *SAGE Open Med.* 2016; 4: 2050312116682256.
- 2) JCS Joint Working Group: Guidelines for rehabilitation in patients with cardiovascular disease (JCS 2012). *Circ J.* 2014; 78: 2022-2093.
- 3) Ender J, Borger MA, *et al.*: Cardiac surgery fast-track treatment in a postanesthetic care unit: six-month results of the Leipzig fast-track concept. *Anesthesiology.* 2008; 109: 61-66.
- 4) Cheng DC, Wall C, *et al.*: Randomized assessment of resource use in fast-track cardiac surgery 1-year after hospital discharge. *Anesthesiology.* 2003; 98: 651-657.
- 5) Saitoh M, Takahashi T, *et al.*: Factors determining achievement of early postoperative cardiac rehabilitation goal in patients with or without preoperative kidney dysfunction undergoing isolated cardiac surgery. *J Cardiol.* 2013; 61: 299-303.
- 6) Ota H, Kawai H, *et al.*: Effect of early mobilization on discharge

- disposition of mechanically ventilated patients. *J Phys Ther Sci.* 2015; 27: 859-864.
- 7) Dunning J, Treasure T, *et al.*: Guidelines on the prevention and management of de novo atrial fibrillation after cardiac and thoracic surgery. *Eur J Cardiothorac Surg.* 2006; 30: 852-872.
 - 8) Benjamin EJ, Wolf PA, *et al.*: Impact of atrial fibrillation on the risk of death: the Framingham Heart Study. *Circulation.* 1998; 98: 946-952.
 - 9) Almassi GH, Schowalter T, *et al.*: Atrial fibrillation after cardiac surgery: a major morbid event? *Ann Surg.* 1997; 226: 501-511.
 - 10) Dunning J, Treasure T, *et al.*: Guidelines on the prevention and management of de novo atrial fibrillation after cardiac and thoracic surgery. *Eur J Cardiothorac Surg.* 2006; 30: 852-872.
 - 11) Shinkai S, Watanabe N, *et al.*: Validity of the “Kaigo-Yobo Check-List” as a frailty index. *Nihon Koshu Eisei Zasshi.* 2013; 60: 262-274.
 - 12) Guralnik JM, Simonsick EM, *et al.*: A short physical performance battery assessing lower extremity function: association with self-reported disability and prediction of mortality and nursing home admission. *J Gerontol.* 1994; 49: M85-94.
 - 13) Morisawa T, Ueno K, *et al.*: Significance of sequential cardiac rehabilitation program through inter-hospital cooperation between acute care and rehabilitation hospitals in elderly patients after cardiac surgery in Japan. *Heart Vessels.* 2017; 32: 1220-1226.
 - 14) Chiarantini D, Volpato S, *et al.*: Lower extremity performance measures predict long-term prognosis in older patients hospitalized for heart failure. *J Card Fail.* 2010; 16: 390-395.
 - 15) Perera S, Mody SH, *et al.*: Meaningful change and responsiveness in common physical performance measures in older adults. *J Am Geriatr Soc.* 2006; 54: 743-749.
 - 16) Echahidi N, Pibarot P, *et al.*: Mechanisms, prevention, and treatment of atrial fibrillation after cardiac surgery. *J Am Coll Cardiol.* 2008; 51: 793-801.
 - 17) Ishida K, Kimura F, *et al.*: Relation of inflammatory cytokines to atrial fibrillation after off-pump coronary artery bypass grafting. *Eur J Cardiothorac Surg.* 2006; 29: 501-505.
 - 18) Albahrani MJ, Swaminathan M, *et al.*: Postcardiac surgery complications: association of acute renal dysfunction and atrial fibrillation. *Anesth Analg.* 2003; 96: 637-643.
 - 19) Creswell LL, Schuessler RB, *et al.*: Hazards of postoperative atrial arrhythmias. *Ann Thorac Surg.* 1993; 56: 539-549.
 - 20) Fuller JA, Adams GG, *et al.*: Atrial fibrillation after coronary artery bypass grafting. Is it a disorder of the elderly? *J Thorac Cardiovasc Surg.* 1989; 97: 821-825.
 - 21) Lauer MS, Eagle KA, *et al.*: Atrial fibrillation following coronary artery bypass surgery. *Prog Cardiovasc Dis.* 1989; 31: 367-378.
 - 22) Creswell LL, Schuessler RB, *et al.*: Hazards of postoperative atrial arrhythmias. *Ann Thorac Surg.* 1993; 56: 539-549.
 - 23) Magnani JW, Wang N, *et al.*: Atrial Fibrillation and Declining Physical Performance in Older Adults: The Health, Aging, and Body Composition Study. *Circ Arrhythm Electrophysiol.* 2016; 9: e003525. doi: 10.1161/CIRCEP.115.003525.
 - 24) Ogawa M, Izawa KP, *et al.*: Poor preoperative nutritional status is an important predictor of the retardation of rehabilitation after cardiac surgery in elderly cardiac patients. *Aging Clin Exp Res.* 2017; 29: 283-290.
 - 25) Tobita R, Iwata K, *et al.*: Clinical characteristics of functional recovery after coronary artery bypass graft surgery in Japanese octogenarians. *J Phys Ther Sci.* 2016; 28: 621-625.
 - 26) Kehlet H and Dahl JB: Anaesthesia, surgery, and challenges in postoperative recovery. *Lancet.* 2003; 362: 1921-1928.
 - 27) Afilalo J, Eisenberg MJ, *et al.*: Gait speed as an incremental predictor of mortality and major morbidity in elderly patients undergoing cardiac surgery. *J Am Coll Cardiol.* 2010; 56: 1668-1676.
 - 28) Lau CP, Leung WH, *et al.*: Haemodynamics of induced atrial fibrillation: a comparative assessment with sinus rhythm, atrial and ventricular pacing. *Eur Heart J.* 1990; 11: 219-224.
 - 29) Groenveld HF, Crijns HJ, *et al.*: Health ABC (Rate Control Efficacy in Permanent Atrial Fibrillation II) study. *J Am Coll Cardiol.* 2011; 58: 1795-1803.
 - 30) Burtin C, Clerckx B, *et al.*: Early exercise in critically ill patients enhances short-term functional recovery. *Crit Care Med.* 2009; 37: 2499-2505.
 - 31) Schweickert WD, Pohlman MC, *et al.*: Early physical and occupational therapy in mechanically ventilated, critically ill patients: a randomised controlled trial. *Lancet.* 2009; 373: 1874-1882.