

# Dynamics of the pneumonic plague epidemic in Madagascar, August to October 2017

Shinya Tsuzuki<sup>1</sup>, Hyojung Lee<sup>1</sup>, Fuminari Miura<sup>1,2</sup>, Yat Hin Chan<sup>1</sup>, Sung-mok Jung<sup>1</sup>, Andrei R Akhmetzhanov<sup>1</sup>, Hiroshi Nishiura<sup>1</sup>

1. Graduate School of Medicine, Hokkaido University, Sapporo, Japan

2. Graduate School of Engineering, The University of Tokyo, Tokyo, Japan

Correspondence: Hiroshi Nishiura (nishiurah@med.hokudai.ac.jp)

## Citation style for this article:

Tsuzuki Shinya, Lee Hyojung, Miura Fuminari, Chan Yat Hin, Jung Sung-mok, Akhmetzhanov Andrei R, Nishiura Hiroshi. Dynamics of the pneumonic plague epidemic in Madagascar, August to October 2017. *Euro Surveill.* 2017;22(46):pii=17-00710. <https://doi.org/10.2807/1560-7917.ES.2017.22.46.17-00710>

Article submitted on 23 Oct 2017 / accepted on 16 Nov 2017 / published on 16 Nov 2017

**Transmission potential and severity of pneumonic plague in Madagascar were assessed. Accounting for reporting delay, the reproduction number was estimated at 1.73. The case fatality risk was estimated as 5.5%. Expected numbers of exported cases from Madagascar were estimated across the world and all estimates were below 1 person from August to October, 2017.**

While plague in Madagascar has been recognised as endemic for more than two decades [1-3], the country has experienced the largest ever observed epidemic of pneumonic plague in 2017 through human-to-human transmission [4]. As of 31 October 2017, the cumulative total numbers of 1,838 cases and 64 deaths have been reported [5]. To guide risk assessment, it is vital to quantitatively characterise the risks of secondary transmission, fatal outcome given infection and exporting the disease from Madagascar to elsewhere. We statistically estimate these risks by analysing the epidemiological data in real time.

## Epidemiological data

Three datasets were obtained. First, the epidemiological bulletin of the Institut Pasteur de Madagascar (IPM) was explored to retrieve the epidemic curve of the sum of suspected, probable and confirmed cases that are stratified by clinical form of plague (i.e. bubonic plague, pneumonic plague and unspecified). Second, in addition to the dataset from IPM, we also analysed the data reported by the World Health Organization Regional Office for Africa (AFRO) [5,6]. The definition of clinical form adhered to the original distinction, i.e. bubonic plague is characterised by fever, painful bubo (lymphadenopathy) at inguinal, femoral, axillary, cervical, or submaxillary nodes, while pneumonic plague is characterised by fever, cough, chest pain and bloody sputum [5]. For each of the IPM and AFRO datasets, we used different epidemic curves of pneumonic plague (Figure 1). The first was the epidemic curve for which we assumed that a constant growth rate (or a

constant reproduction number) was maintained. For the IPM dataset, this was in a report from 21 October 2017, while for the AFRO dataset, this was in a report from 24 October 2017. Both reports had data up to 17 October 2017. The latest epidemic curves of IPM and AFRO as of 31 October 2017 and 3 November, respectively, are shown in Figures 1A and 1C, but our estimations were conducted on 24 October 2017 and used one earlier report for each data source. In these reports, the number of cases in recent days was likely underestimated due to reporting delay. The other epidemic curves considered in our study (Figures 1B and 1D) were multiple epidemic curves of pneumonic plague, each compiled at a successive time point during the outbreak for reporting purposes. These curves overlap to a certain extent, but in general a higher number of cases at a given calendar date may be observed in the curves compiled/updated later in the outbreak. This is a reflection of the reporting delay, which is retrospectively addressed with time as more data become available. In addition to counts of cases, we also obtained reported numbers of deaths at multiple reporting dates from IPM. That is, on 3, 4, 5, 12, 15, 17 and 31 October 2017, there have been 9, 9, 9, 22, 23, 27 and 48 deaths among the total of 67, 86, 106, 353, 512, 573 and 1,138 cases, respectively.

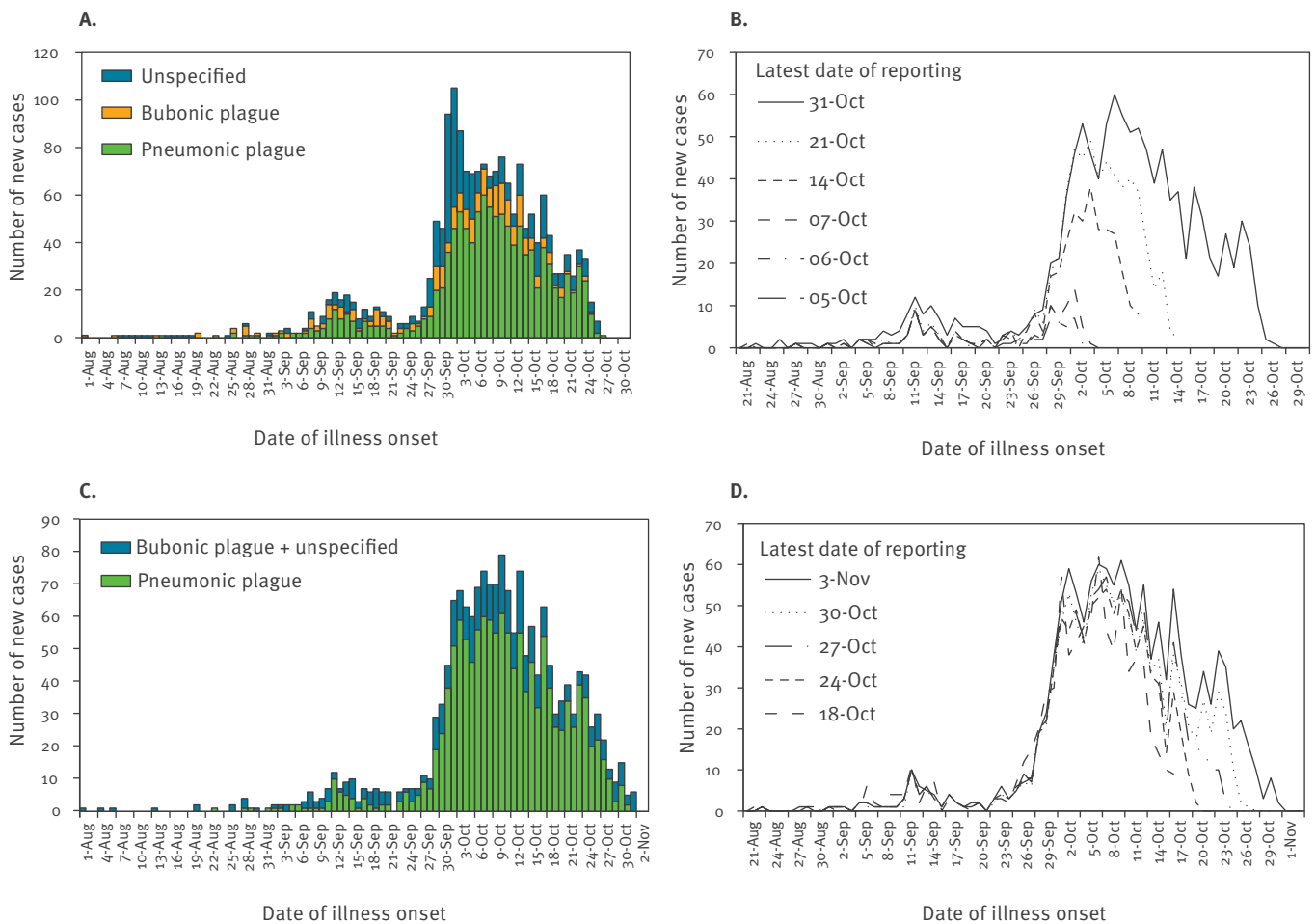
The third dataset consisted of population data for Madagascar that was obtained from the World Bank [7], as well as inbound and outbound travel volumes retrieved from the Ministry of Tourism in Madagascar [8] and the World Tourism Organization (UNWTO) [9], the latter including business travellers in the counts of travellers. The average duration of stay of inbound international travellers in Madagascar was obtained from the World Bank [7].

## Epidemiological modelling

Here we estimate three key quantities using mathematical models, i.e. (i) the basic reproduction number,  $R_0$ , the average number of secondary cases generated by a

**FIGURE 1**

Epidemic curves of plague cases in Madagascar, August–October 2017



(A) and (C) The epidemic curves of plague by clinical form obtained from the Institut Pasteur de Madagascar (IPM) [5] and the World Health Organization Regional Office for Africa (AFRO) [6], respectively. These are the latest available epidemic curves of the plague epidemic in Madagascar as of 31 October 2017 for IPM and 3 November 2017 for AFRO (the latest access to the most updated data). Using earlier epidemic curves (reported on 21 October and 24 October 2017 for IPM and AFRO, respectively) and implementing statistical estimation on 24 October 2017,  $R_0$  was estimated, assuming that there was a constant growth rate (i.e. a constant reproduction number) by 17 October 2017. (B) (D) multiple epidemic curves of pneumonic plague cases reported by IPM and AFRO respectively at different time points of the outbreak. Line graphs show the latest number of cases at the date of reporting. Reports are updated as time goes on, and the count of cases on the same day is also modified. The vertical differences between lines on the same illness onset date reflects the delay in reporting.

single primary case, (ii) the case fatality risk (CFR), i.e. the conditional risk of death given diagnosis as case, and (iii) the expected number of pneumonic plague cases departing from Madagascar to each country, comprising importations by visitors to Madagascar as they return to their country of residence and exportations by local resident of Madagascar as they travel abroad. Assuming that the current pneumonic plague epidemic has been driven by an index case [4,10], we focus on pneumonic plague data and assume that all cases of pneumonic plague were generated by human-to-human transmission (i.e. primary pneumonic plague).

### Basic reproduction number

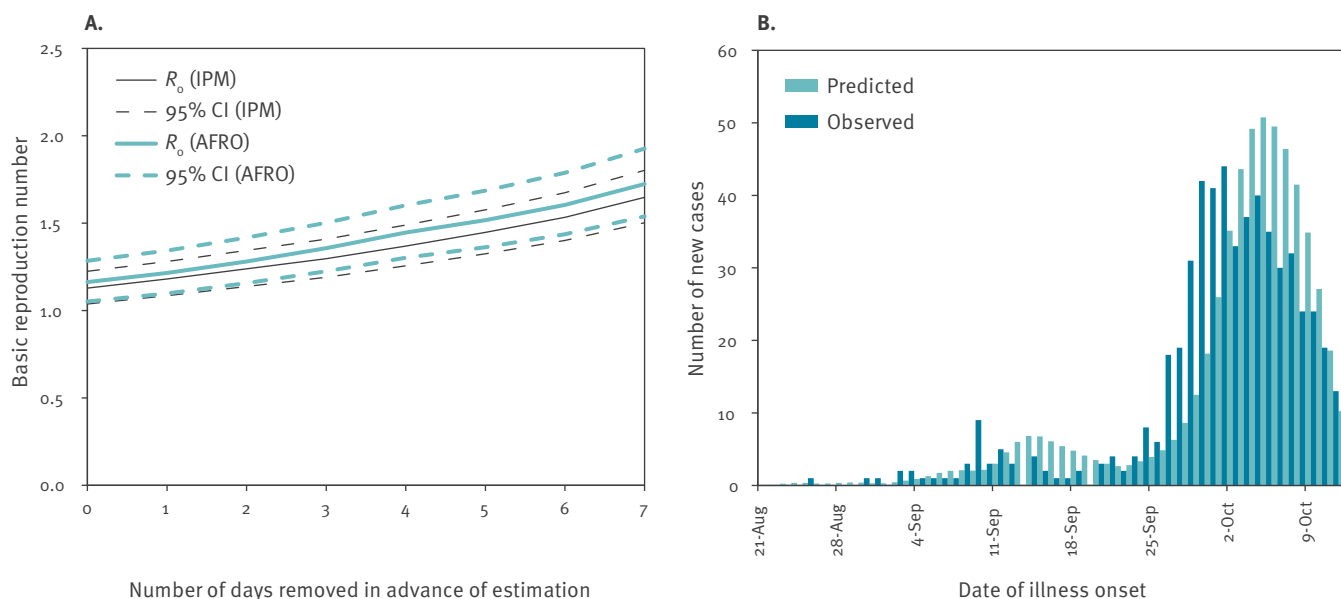
To estimate  $R_0$ , we employed the renewal equation. Let  $j_t$  be the number of new cases on day  $t$ , we have

$$E(j_t) = R_0 \sum_{\tau=1}^{t-1} j_{t-\tau} g_{\tau}, (1)$$

where  $g_{\tau}$  represents the discretised distribution of the serial interval derived as  $g_{\tau} = G(\tau) - G(\tau - 1)$  for  $\tau > 0$  with mean and variance at 5.1 days and  $2.3 \text{ day}^2$  for  $G(\tau)$  (i.e. a gamma distribution with shape and scale parameters at 5.4 and 0.9, respectively) [11]. Day 0 was set to be 23 August 2017 on which the index case developed fever (and here we discard infectiousness before the illness onset). Assuming that the observed incidence followed a Poisson distribution with the expected value in the right-hand side of (1), we estimated  $R_0$  using the single epidemic curve (obtained from IPM on 21 October and from AFRO on 24 October, respectively) assuming that the constant growth rate was applicable by 17 October 2017. The estimation was conducted by independently using IPM and AFRO data. However, since the latest cases in that curve were likely under-reported due to reporting delay, we truncated the epidemic curve by removing the information of the latest cases from our analysis for 0–7 recent days (assuming that cases in

**FIGURE 2**

Transmission potential of primary pneumonic plague during the epidemic in Madagascar, August–October 2017



AFRO: World Health Organization Regional Office for Africa; CI: confidence interval; IPM: Institut Pasteur de Madagascar (IPM);  $R_0$ : basic reproduction number

(A) The basic reproduction number of pneumonic plague outbreak in Madagascar as estimated either from the epidemic curve reported on 21 October by IPM or the epidemic curve reported on 24 October 2017 by AFRO. Horizontal axis measures the number of recent days that were removed from our analysis due to reporting delay. Black straight and dashed lines represent  $R_0$  and its 95% confidence intervals estimated by IPM data and turquoise straight and dashed lines represent  $R_0$  and its 95% confidence intervals estimated by AFRO data. (B) Comparison between predicted and observed epidemic curves on 21 October 2017 reported by IPM. Time delay in reporting was captured by analysing multiple curves. Day 0 was set to be 23 August 2017 on which the index case developed fever.

recent 0–7 days were under-reported due to reporting delay).

We also estimated  $R_0$  from multiple curves (Figure 1B) provided by IPM, while jointly quantifying the reporting delay distribution. In this analysis, we did not explore the dataset from AFRO because it contained some discrepancies of values among the curves (i.e. the number of cases declined as a function of reporting date). Let  $c_{t,x}$  be daily reported incidence on day  $t$  with the reporting date on day  $x$ . Then, the reported incidence is expressed by using the renewal equation as follows. Let  $F(t)$  be the cumulative distribution function of the time from illness onset to reporting, which is assumed to follow a gamma distribution. The observed cases on day  $t$  are modelled as

$$c_{t,x} = j_t F(x - t). \quad (2)$$

Thus, we have

$$E(c_{t,x}) = \frac{c_{t,x'}}{F(x'-t)} F(x - t), \quad (3)$$

where  $x'$  is the reporting date of another epidemic curve. Let us rewrite the expected value of cases on day  $t$  with reporting date on day  $x$  as

$$A_{t,x}(R_0, \theta) = E(c_{t,x}).$$

To estimate parameters governing  $F(x-t)$ , we assume that  $c_{t,x}$  follows a Poisson distribution:

$$L(\theta; c_{t,x}) = \prod_{j=1}^m \prod_{t=1}^{x(j)-1} \left( \frac{e^{-A_{t,x(j)}(\theta)} A_{t,x(j)}(\theta)^{c_{t,x(j)}}}{c_{t,x(j)}!} \right), \quad (4)$$

where  $\theta$  stands for the population parameter of  $F(x-t)$ ,  $x(j)$  is the latest calendar date of reporting for an epidemic curve  $j$ , and  $m$  is the number of available epidemic curves ( $m=6$ ). Subsequently, we model the data generating process of the observed epidemic curve and renewal process using the following renewal equation:

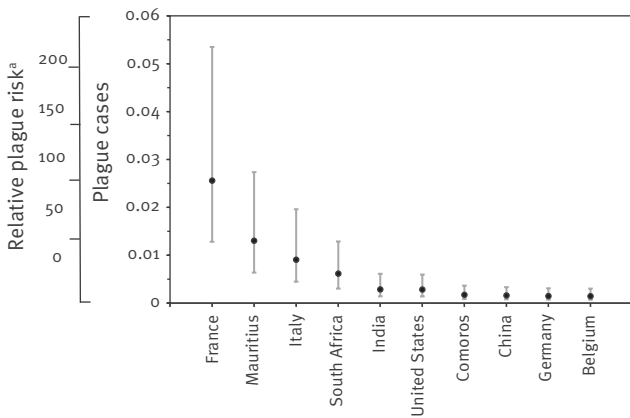
$$E[c_{t,x_{\max}}] = R_0 \sum_{\tau=1}^{t-1} c_{t-\tau,x_{\max}} g_\tau \frac{F(x_{\max} - t)}{F(x_{\max} - t + \tau)}, \quad (5)$$

where  $x_{\max}$  was 17 October 2017 (i.e. the latest day by which the constant reproduction number was assumed). Let  $A_{t,x_{\max}}(R_0) = E(c_{t,x_{\max}})$ . The likelihood function to estimate  $R_0$  was

$$L(R_0; c_{t,x_{\max}}) = \prod_{t=1}^{x_{\max}} \left( \frac{e^{-A_{t,x_{\max}}(R_0)} A_{t,x_{\max}}(R_0)^{c_{t,x_{\max}}}}{c_{t,x_{\max}}!} \right). \quad (6)$$

**FIGURE 3**

Expected number of pneumonic plague cases travelling from Madagascar, 1 August–31 October 2017



Mean and 95% tolerance interval of the estimated number of cases travelling from Madagascar and the estimated relative risks (RR) during the outbreak from 1 August to 31 October 2017 (for a total of 92 days). Only the result of top-10 high risk countries is shown.

<sup>a</sup> To calculate the RR, expected number of cases in France, the country at highest risk, was set as 100, so that the RR in other countries can be compared. Tolerance intervals were calculated based on 10,000 iteration samplings.

The maximum likelihood estimate of  $R_0$  was obtained by minimising the negative logarithm of (6).

### Case fatality risk

To estimate the CFR, we account for the delay from illness onset to death,  $h_s$ , which was assumed as given by  $h_s = H(s) - H(s - 1)$  for  $s > 0$  where  $H(s)$  follows an exponential distribution with mean 2.3 days [12]. For seven different time points with observation ( $t_i$ , where  $i=1, 2, \dots, 7$ ), the cumulative number of deaths,  $D_{t_i}$  was reported. Let  $\pi$  be the parameter representing the unbiased CFR, the likelihood function to estimate  $\pi$  is

$$L(\pi; j_t, \theta) = \prod_{t_i} \binom{t_i}{D_{t_i}} \left( \frac{\sum_{s=1}^{t_i-1} j_{t-s} h_s}{\sum_{t=1}^{t_i} j_t} \right)^{D_{t_i}} \left( 1 - \frac{\sum_{t=2}^{t_i-1} \sum_{s=1}^{t-1} j_{t-s} h_s}{\sum_{t=1}^{t_i} j_t} \right)^{\sum_{t=1}^{t_i} j_t - D_{t_i}} \quad (7)$$

The maximum likelihood estimate of the CFR was obtained by minimising the negative logarithm of (7).

### Expected number of cases due to travel to and from Madagascar

Estimation of the expected number of cases in each country was carried out adhering to a method proposed by Dorigatti et al. [13]. Let  $C_W$  be the cumulative number of plague cases in time window  $W$  in Madagascar. Expected number of Madagascar residents infected by *Yersinia pestis* and travelling to country  $D$  before

the end of incubation or infectious periods in time window  $W$  was computed as

$$E_{M,D}^W = C_W \frac{N_D}{365} \frac{T_E + T_I}{P_M}, \quad (8)$$

where  $N_D$  is the annual number of travellers to country  $D$  from Madagascar.  $T_E$  and  $T_I$  are the incubation and infectious periods of pneumonic plague. The incubation period was assumed to follow a lognormal distribution with mean 4.3 days and standard deviation (SD) of 1.8 days [14]. The infectious period was also assumed to follow a lognormal distribution with mean 2.5 days and SD 1.2 days [14].  $P_M$  is the population size of Madagascar.

Similarly, the expected number of international travellers with pneumonic plague to home country  $O$  before the end of incubation and infectious periods is

$$I_{O,M}^W = T_O \sum_{m=1}^{12} f_m p_m \frac{C_W}{P_M} \frac{T_E + T_I}{W}, \quad (9)$$

where  $T_O$  is the annual number of international travellers to Madagascar from country  $O$ .  $f_m$  and  $p_m$  are the proportion of international travellers visiting Madagascar in month  $m$  and relative proportion of the epidemic window  $W$  occurring in month  $m$ . Variability in the incubation and infectious periods was captured by randomly drawing their values from respective distributions for 10,000 times.

### Results for the estimated parameters

Using the observed epidemic curves from IPM and AFRO that were reported 31 October and 3 November, 2017, respectively, and assuming a constant reproduction number by 17 October 2017,  $R_0$  was estimated as shown in Figure 2A. Varying the length of days to remove the data from analysis for 0 to 7 days, the maximum likelihood estimate of  $R_0$  estimated based on the IPM dataset ranged from 1.12 to 1.65. Similarly,  $R_0$  estimated based on the AFRO dataset ranged from 1.16 to 1.72. Figure 2B compares the observed (IPM data) and predicted latest epidemic curves on 21 October 2017 employing an alternative model that explicitly addressed the reporting delay.  $R_0$  was estimated at 1.73 (95% confidence interval (CI): 1.55–1.95). Estimated mean length of reporting delay and variance were 6.52 days (95% CI: 5.55–7.57) and 20.69 day<sup>2</sup> (95% CI: 13.21–31.68), respectively. The CFR was estimated at 5.49% (95% CI: 4.67–6.40).

Figure 3 shows the expected number of cases travelling from Madagascar (i.e. summation of importation and exportation) from 1 August to 31 October 2017 (for a total of 92 days) with 95% tolerance interval (i.e. percentile estimates from 2.5<sup>th</sup> to 97.5<sup>th</sup> percentiles of random simulations), with the expected numbers for top-10 high risk countries. The highest number is less than 0.1 person, indicating that there is no strong indication of the high risk of international spread. The



expected number in all other countries is given in the Online Appendix file [15]. While African countries in close proximity to Madagascar (e.g. Mauritius, South Africa and Comoros) showed relatively higher values, some populous countries (e.g. China, India and United States) and countries with high volume of travellers to Madagascar (e.g. France, Italy and Germany) were also estimated to be at risk.

## Discussion

The present study is the first to comprehensively assess the early epidemiological dynamics of primary pneumonic plague epidemic in Madagascar in 2017 using several different mathematical models.  $R_0$  was estimated to range from 1.12 to 1.72 using single epidemic curves by IPM and AFRO reported on 21 October and 24 October 2017, respectively, and assuming a constant growth rate of cases. Using the IPM data, and explicitly accounting for the reporting delay which required the mean of 6.52 days,  $R_0$  was estimated at 1.73. CFR has been estimated to be as low as 5.5%. The expected number of imported cases in each country was estimated to be far less than the value of 1 person.

The transmissibility,  $R_0$ , appeared to be consistent with, or slightly higher, than published estimates that rest on contact tracing data, including an epidemic in Madagascar in 2015 ( $R_0$  ranging from 1.1 to 1.3 and 1.4 in [14,16]), and a stochastic model-based estimate relying on cumulative incidence data from 1906 to 2006 ( $R_0$  ranging from 1.0 to 1.4 [17]). In our study, two different methods echoed each other to interpret the transmissibility. The transmissibility of the ongoing epidemic is not considerably different from earlier ones, and our analysis endorses that the transmissibility of primary pneumonic plague is in general not very high. Instead, due to the widespread number of human-to-human transmissible cases, the outbreak can reach geographic areas (cities) in Madagascar where there were no plague cases in earlier days. The CFR appeared to be smaller than a published estimate, e.g. reaching up to 70% [16]. By properly tracing contacts and bringing diagnosed individuals under appropriate antibiotic treatment, the estimate indicates that early treatment could prevent patients from fatal outcome.

As an additional finding, the risk of international spread was shown to be low. The expected number of imported cases of less than 0.1 person is much smaller than those calculated for Zika virus [13]. This can be mainly attributed to two facts. First, the absolute number of diagnosed plague cases has still remained below 3,000 cases, while Zika virus induced a far greater number of infections. Second, Zika virus infection involves asymptomatic presentation and also clinically mild cases, but plague is far more virulent than Zika virus requiring close medical attendance and treatment. There have been no confirmed cases outside Madagascar, and our study objectively endorsed that the risk of international spread is very

low. Nevertheless, travellers should be made aware of the ongoing plague epidemic [10].

Two limitations must be noted. First, our modelling approach had to ignore the detailed heterogeneous transmission dynamics. For instance, spatial heterogeneity or more microgeographic insights have not been incorporated into our approach mainly due to limited information for implementing geospatial modelling. Moreover, contact heterogeneity, e.g. the role of super-spreading events, has also not been fully captured. Second, we discarded datasets other than pneumonic plague. Although it is likely to be very rare, a bubonic plague case could develop to become a case of secondary pneumonic plague and cause a secondary transmission event to generate primary pneumonic plague cases. This issue can be addressed once clinical forms of all cases are clarified.

In conclusion, the transmission potential of pneumonic plague in Madagascar 2017 is not different from those in earlier pneumonic plague epidemics. The low CFR is potentially indicative of successful treatment outcome, and the risk of international spread is very limited.

## Acknowledgements

HN received funding support from the Japan Agency for Medical Research and Development and the Japan Science and Technology Agency (JST) CREST program (JPMJCR1413) and RISTEX program for Science of Science, Technology and Innovation Policy, the Program for Advancing Strategic International Networks to Accelerate the Circulation of Talented Researchers, supported by the Japan Society for the Promotion of Science (JSPS), and JSPS KAKENHI 16KT0130, 17Ho4701, 17Ho6487 and 17J07706. YHC thanks The Ministry of Education, Culture, Sports, Science, and Technology (MEXT), Japan for its scholarship program. The funders had no role in study design, data collection and analysis, decision to publish, or preparation of the manuscript.

## Conflict of interest

None declared.

## Authors' contributions

Conception of study design: HN, Model formulation: HL, YHC, ARA and HN, Collation of data: ST, FM and SMJ, Analysis of data: ST, HL, FM, YHC, SMJ, ARA and HN. All authors jointly drafted and revised the manuscript.

## References

1. Vogler AJ, Andrianaivoarimanana V, Telfer S, Hall CM, Sahl JW, Hepp CM, et al. Temporal phylogeography of *Yersinia pestis* in Madagascar: Insights into the long-term maintenance of plague. *PLoS Negl Trop Dis*. 2017;11(9):e0005887. <https://doi.org/10.1371/journal.pntd.0005887> PMID: 28873412
2. Vogler AJ, Chan F, Nottingham R, Andersen G, Drees K, Beckstrom-Sternberg SM, et al. A decade of plague in Mahajanga, Madagascar: insights into the global maritime spread of pandemic plague. *MBio*. 2013;4(1):e00623-12. <https://doi.org/10.1128/mBio.00623-12> PMID: 23404402
3. Vogler AJ, Chan F, Wagner DM, Roumagnac P, Lee J, Nera R, et al. Phylogeography and molecular epidemiology of *Yersinia pestis* in Madagascar. *PLoS Negl Trop Dis*. 2011;5(9):e1319. <https://doi.org/10.1371/journal.pntd.0001319> PMID: 21931876

4. Anonymous. Deadly plague epidemic rages in Madagascar 2017. *Science*. 2017. Available from: <http://www.sciencemag.org/news/2017/10/deadly-plague-epidemic-rages-madagascar>
5. Institut Pasteur de Madagascar (IPM). Synthèse des résultats biologiques 2017. Antananarivo: IPM; 2017. Available from: <http://www.pasteur.mg/synthese-resultats-biologiques/>
6. World Health Organization Regional Office for Africa. Plague outbreak situation reports 2017. Available from: <http://www.afro.who.int/health-topics/plague/plague-outbreak-situation-reports>
7. World Bank MADAGASCAR Tourism Sector Review. 2013. World Bank: Washington D.C.; 2013. Available from <http://documents.worldbank.org/curated/en/994701467992523618/pdf/>
8. Ministry of Tourism. Madagascar. APMF STATISTIQUES DU TOURISME 2017. Ministry of Tourism: Madagascar; 2017. Available from [http://www.tourisme.gov.mg/wp-content/uploads/2017/05/2017\\_01-Statistiques%20du](http://www.tourisme.gov.mg/wp-content/uploads/2017/05/2017_01-Statistiques%20du)
9. Yearbook of Tourism Statistics dataset. Madagascar: World Tourism Organization (UNWTO); 2017. Available from <http://www.e-unwto.org/doi/suppl/10.5555/unwtotfbo450250119952016201709>
10. Kmiotowicz Z. Pneumonic plague outbreak hits cities in Madagascar. *BMJ*. 2017;359:j4595. <https://doi.org/10.1136/bmj.j4595> PMID: 28982693
11. Nishiura H, Schwehm M, Kakehashi M, Eichner M. Transmission potential of primary pneumonic plague: time inhomogeneous evaluation based on historical documents of the transmission network. *J Epidemiol Community Health*. 2006;60(7):640-5. <https://doi.org/10.1136/jech.2005.042424> PMID: 16790838
12. Nishiura H. Epidemiology of a primary pneumonic plague in Kantoshu, Manchuria, from 1910 to 1911: statistical analysis of individual records collected by the Japanese Empire. *Int J Epidemiol*. 2006;35(4):1059-65. <https://doi.org/10.1093/ije/dylog1> PMID: 16684896
13. Dorigatti I, Hamlet A, Aguas R, Cattarino L, Cori A, Donnelly CA, et al. International risk of yellow fever spread from the ongoing outbreak in Brazil, December 2016 to May 2017. *Euro Surveill*. 2017;22(28):30572. <https://doi.org/10.2807/1560-7917.ES.2017.22.28.30572> PMID: 28749337
14. Gani R, Leach S. Epidemiologic determinants for modeling pneumonic plague outbreaks. *Emerg Infect Dis*. 2004;10(4):608-14. <https://doi.org/10.3201/eid1004.030509> PMID: 15200849
15. Tsuzuki S, Lee H, Miura F, Chan YH, Jung S, Akhmetzhanov AR, Hiroshi Nishiura H. Dynamics of the pneumonic plague epidemic in Madagascar, August to October 2017. Supplementary material. Available from: [http://plaza.umin.ac.jp/~infepi/appendix\\_plague.csv](http://plaza.umin.ac.jp/~infepi/appendix_plague.csv)
16. Ramasindrazana B, Andrianaivoarimanana V, Rakotondramanga JM, Birdsell DN, Ratsitorahina M, Rajerison M. Pneumonic plague transmission, Moramanga, Madagascar, 2015. *Emerg Infect Dis*. 2017;23(3):521-4. <https://doi.org/10.3201/eid2303.161406> PMID: 28221119
17. Nishiura H, Yan P, Sleeman CK, Mode CJ. Estimating the transmission potential of supercritical processes based on the final size distribution of minor outbreaks. *J Theor Biol*. 2012;294:48-55. <https://doi.org/10.1016/j.jtbi.2011.10.039> PMID: 22079419

## License and copyright

This is an open-access article distributed under the terms of the Creative Commons Attribution (CC BY 4.0) Licence. You may share and adapt the material, but must give appropriate credit to the source, provide a link to the licence, and indicate if changes were made.

This article is copyright of the authors, 2017.