

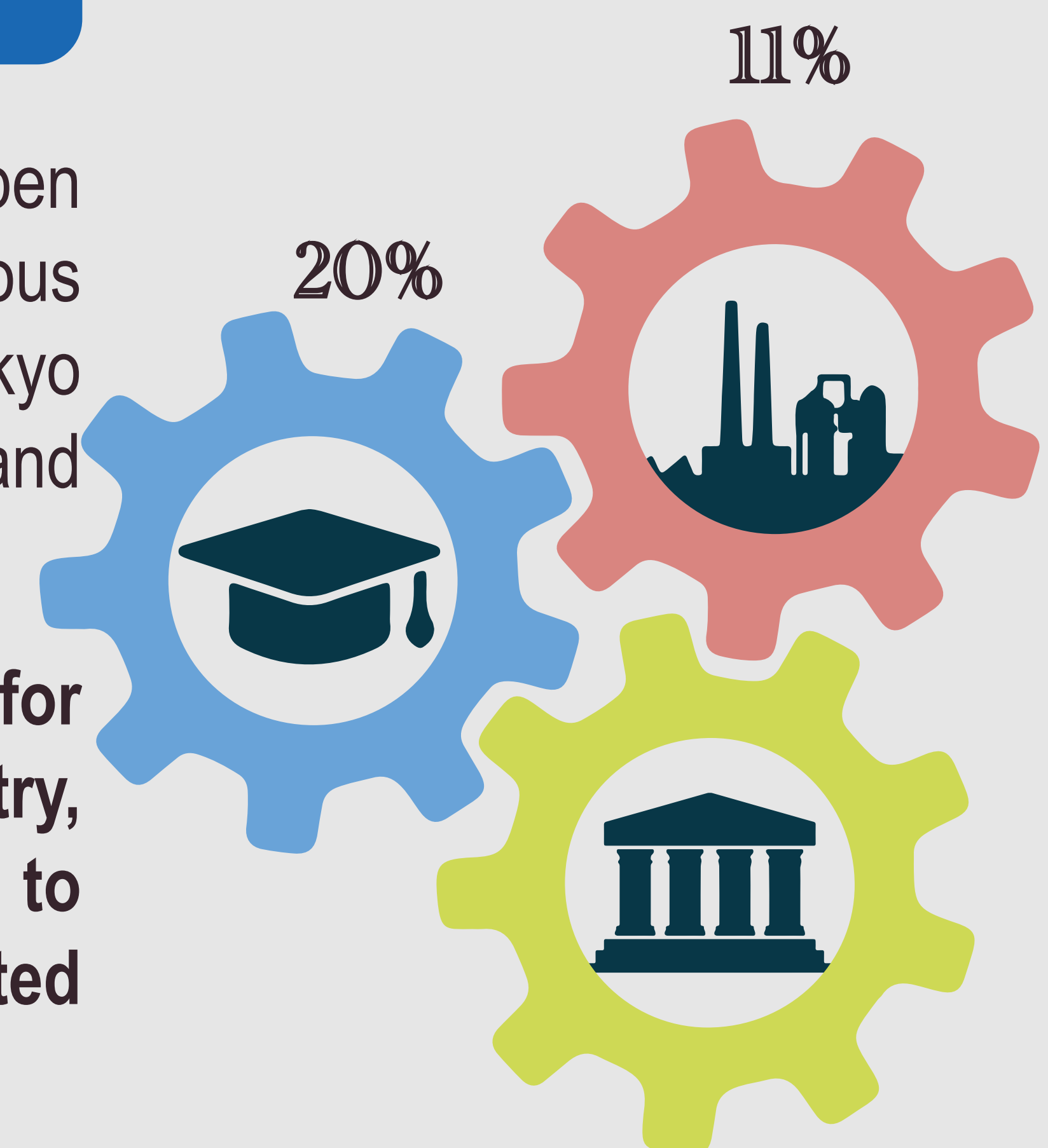
## Abstract

This report details the current status and challenges of **university education-related open data**, using TOKYO OPEN DATA as an example. It highlights that the pertinent **textual and non-textual data is gathered but is not open or useable**. The report then provides several key recommendations on how to address these challenges, as well as related challenges in open data and data science.



## Introduction

- “TOKYO OPEN DATA” is an open data catalog site containing various data and information on the Tokyo Metropolitan Government (TMG) and municipalities
- Open data creates potential for collaboration between industry, government, and academia to create policies and services related to higher education



## Study question

“What are the challenges of open data related to university education?”

## Methodology

Education-related data is not collected, or not open enough.

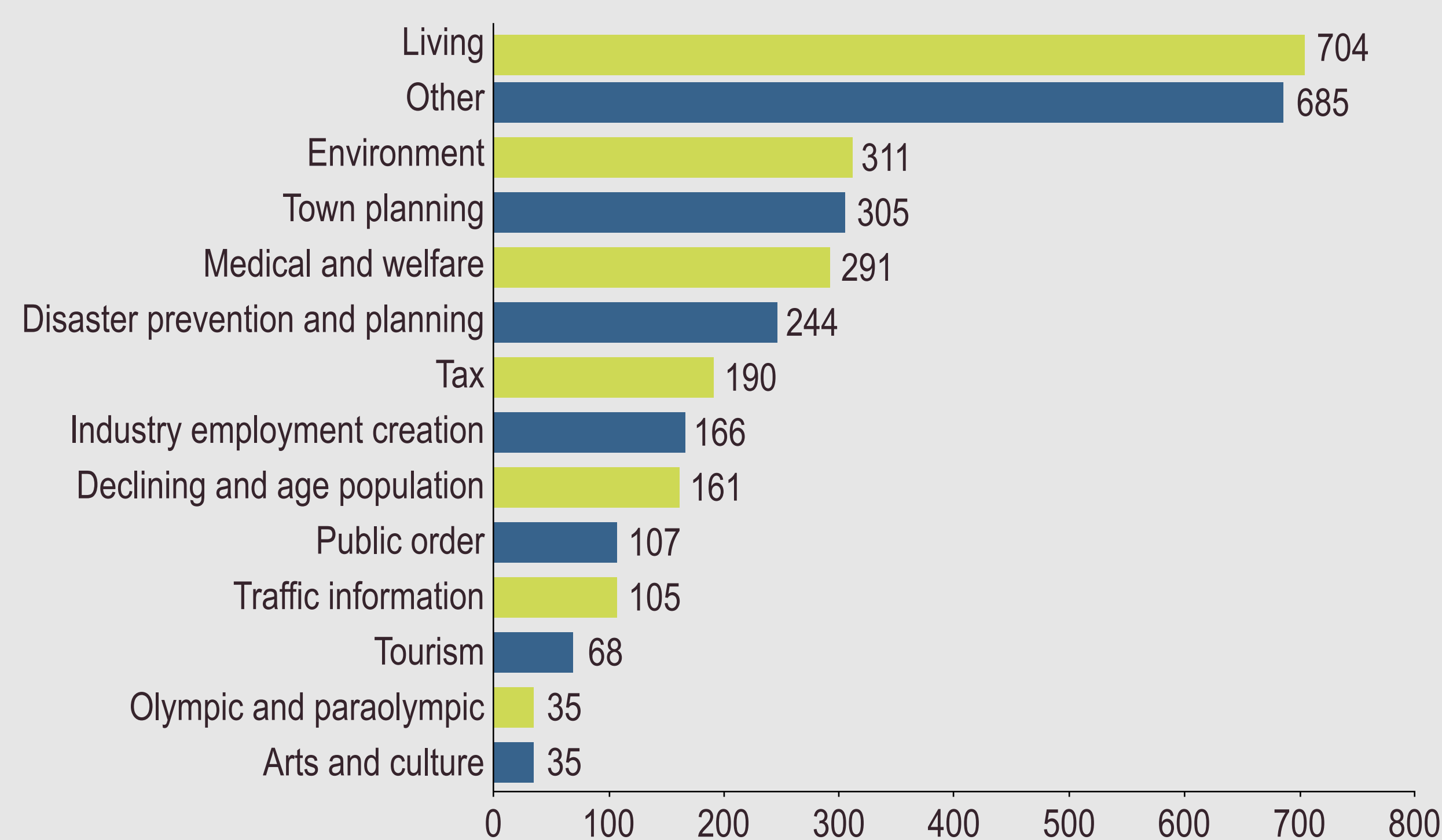


Fig 1: 14 data categories and number of datasets

## Challenges

- Vast amounts of education-related data (included text data) are generated by universities but are **not available as open data**
- Large amount of data collected are **not machine-readable**
- Scattered data and inconsistent data formats **for similar content (e.g. student lifestyle survey)**

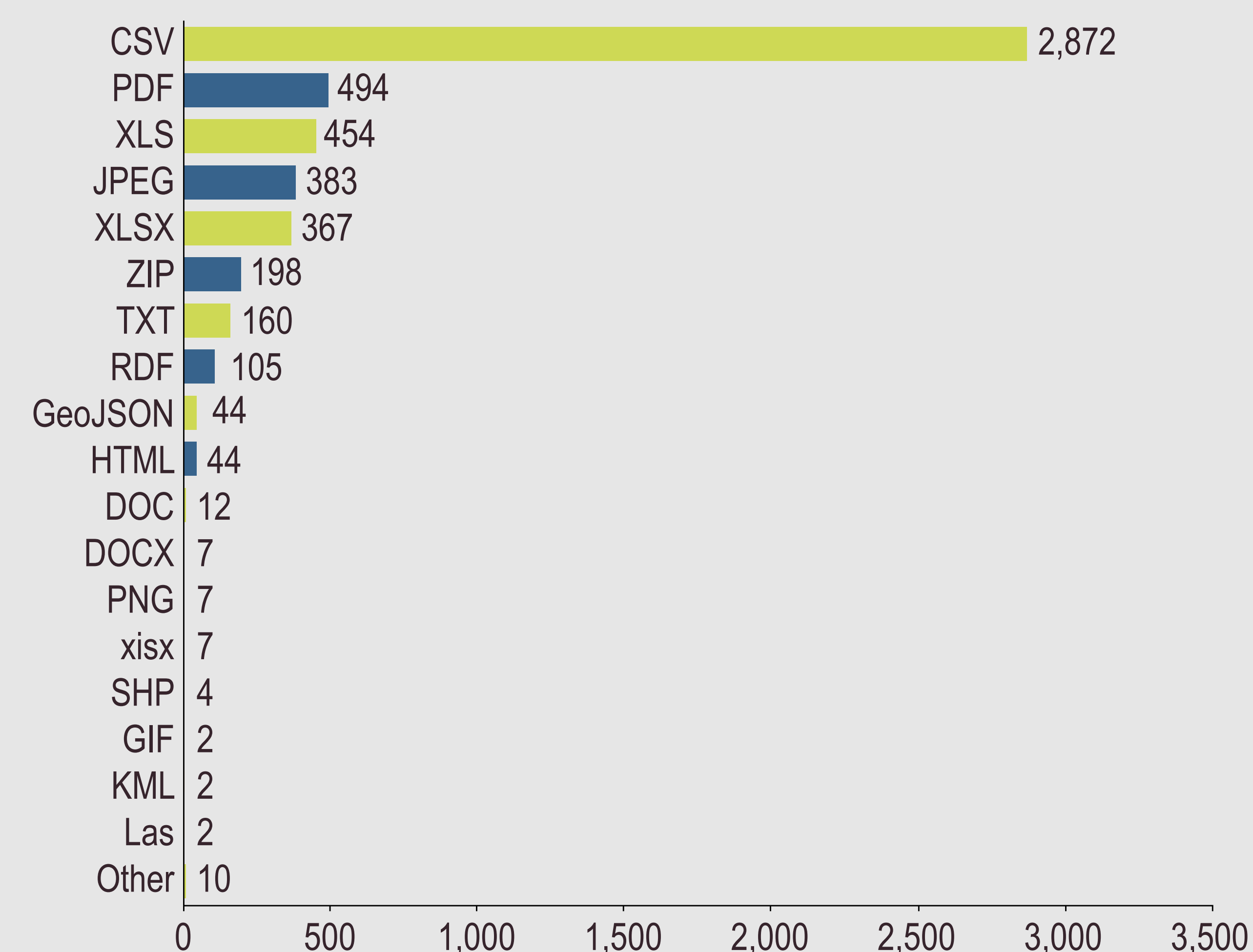


Fig 2: File formats of datasets

## Recommendations

- Context-specific data and highly public data as open data
- Data literacy education for university faculty and staff
- Data volunteering and crowdsourcing for data cleaning work
- Combined data from government, industry, and universities to obtain three-dimensional view
- Active collaboration between government and higher education community to:
  - Develop data science human resources
  - Create new knowledge through open data



## Reference:

Tsubakimoto (2022). Current Status and Issues of University Education-related Data in TOKYO OPEN DATA.

